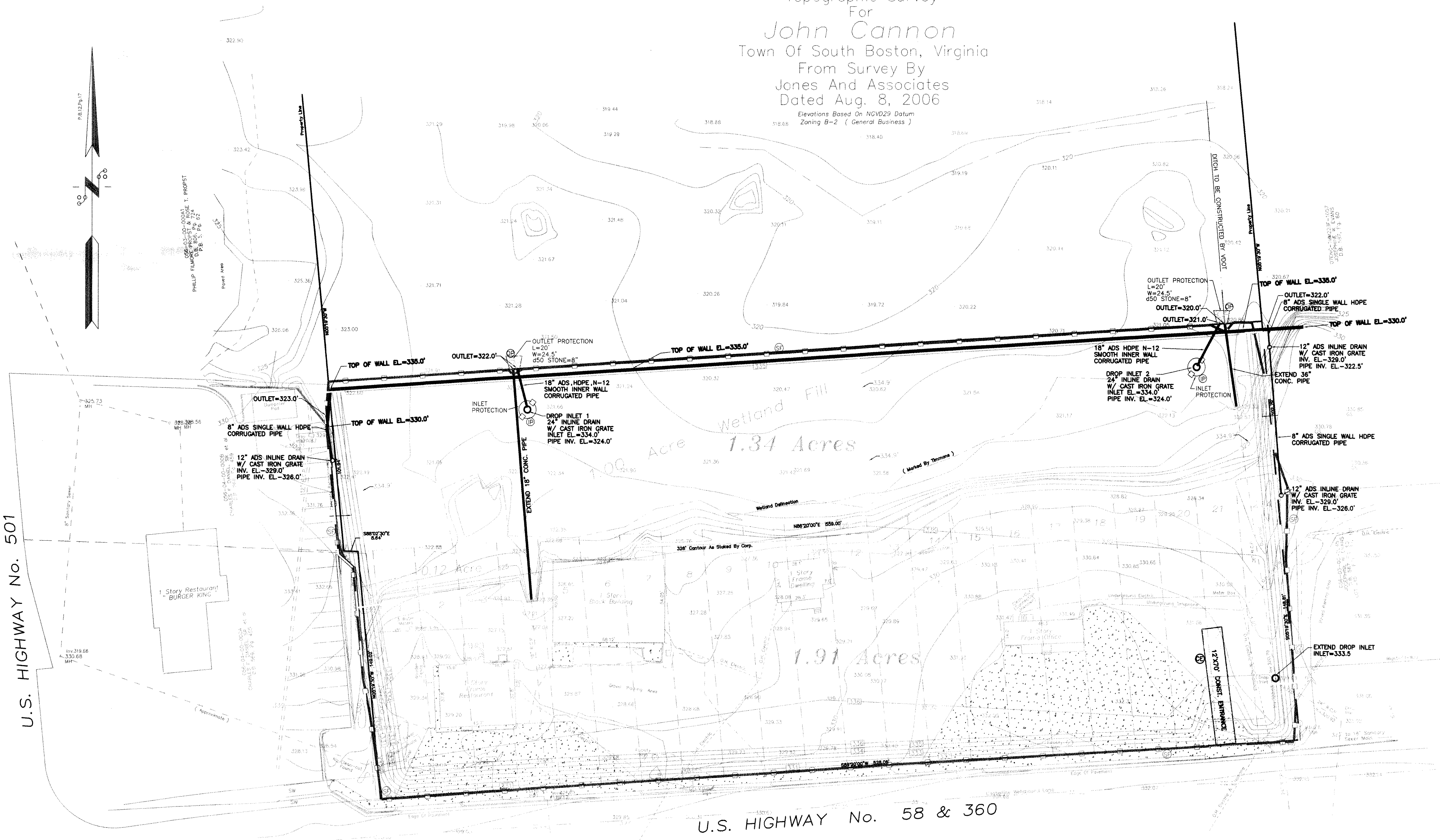


Topographic Survey
 For
John Cannon
 Town Of South Boston, Virginia
 From Survey By
 Jones And Associates
 Dated Aug. 8, 2006

Elevations Based On NGVD29 Datum
 Zoning B-2 (General Business)



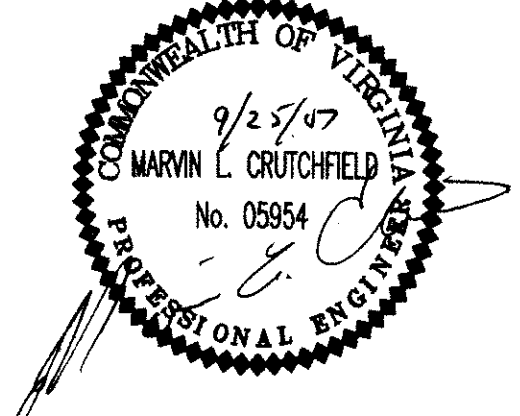
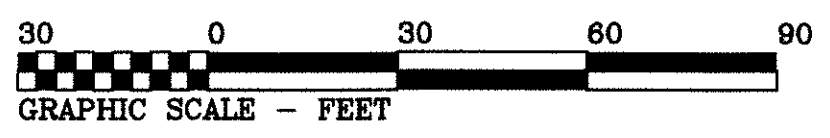
U.S. HIGHWAY No. 501

U.S. HIGHWAY No. 58 & 360

- LEGEND**
- DA DRAINAGE AREA
 - DRAINAGE BOUNDARY
 - OUTLET PROTECTION
 - INLET PROTECTION
 - CONSTRUCTION ENTRANCE
 - SILT FENCE
 - DROP INLET
 - SPOT ELEVATION
 - PROPOSED CONTOURS
 - BLOCK WALL

**GRADING AND DRAINAGE PLAN
 AND
 EROSION AND SEDIMENT CONTROL PLAN**

FOR
JOHN CANNON
RIVERDALE SITE
TOWN OF SOUTH BOSTON, VA.



CRUTCHFIELD ASSOCIATES, INC.
 SURVEYORS - ENGINEERS - PLANNERS
 7996 HIGHWAY 47 EAST P. O. BOX 268
 CHASE CITY, VIRGINIA 23924
 434-372-5884 FAX 434-372-0871
 FILE NO.: 078856&D.DWG DATE: AUG. 1, 2007
 078856&D.DWG